

IN THIS ISSUE

Page 2

Birthdays
Rainfall
Poetry Corner
Sunrise by Mother Nature

Page 3

Pretty Scene After the
Snow Stopped
Meet Julia McShea!
The ED View

Page 4

Fall Foliage Boat Tour
Full Moon at The Village
The Village Radio Players

Page 5

Halloween Costume Party

Page 6

Culinary Corner
Meet Your New Neighbors!
Happy Hour Chat

Page 7

Bulletin Board
PSU Homecoming Parade

Page 8

Fall Socials at
Personal Care
Happy Halloween!

Editors

Kim McGinnis
Chad Miller

Photographers

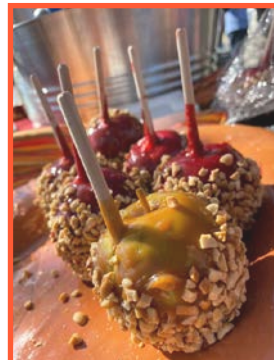
Kim McGinnis
Samantha Statham
Rosalie D.
Karen F.
Veda B.
Edna P.

Contributors

Kim McGinnis
Marion D.
Samantha Statham
Matt Lambert
Ellen Corbin
Jerry G.
Julia McShea
Madisen Q.

HARVEST FEST

“Super crowd and super weather” said Don A., our fire maker, hot dog cooker and s’more extraordinaire! Thanks Don! Harvest fest is always a hit.



The Village

AT PENN STATE



Live Your Dreams Today!

RAINFALL/ SNOWFALL AT THE VILLAGE

by Marion D.



SNOWFALL

RAIN

	November	
-	2	0.10
-	7	0.50
-	11	3.00
3.70	15	-
Flurries	17	-

Measurements in Inches

Poetry Corner

*Everyone is welcome to the
Poetry Group the
3rd Wednesday of every month
at 3pm in the Lions Den *

NO DIFFERENCE by Shel Silverstein

Small as a peanut,
Big as a Giant,
We're all the same size
When we turn off the light.

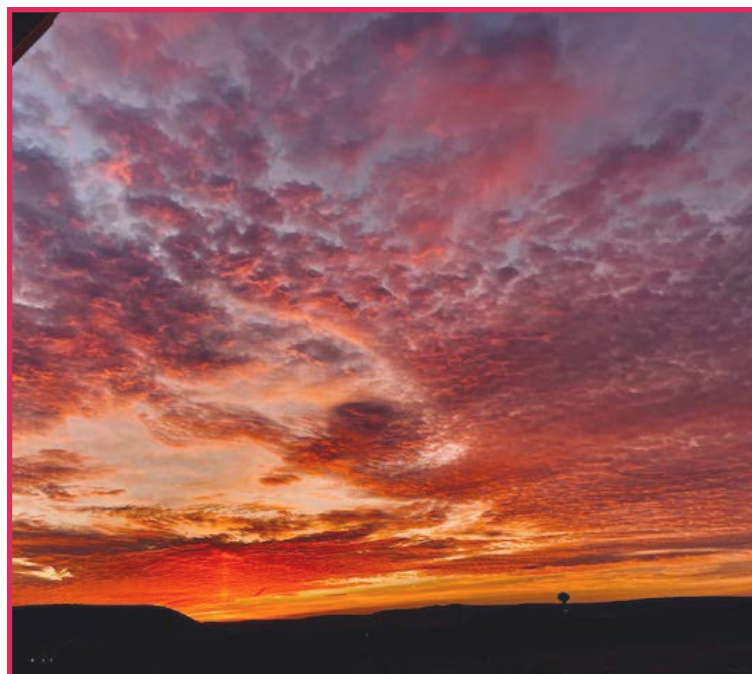
Rich as a sultan,
Poor as a mite,
We're all worth the same
When we turn off the light.

Red, black or orange,
Yellow or white,
We all look the same
When we turn off the light.

So maybe the way
To make everything right
Is for God to just reach out
And turn off the light!

~ Submitted by Jerry G.

SUNRISE BROUGHT TO YOU BY MOTHER NATURE



Submitted By Karen F.

PRETTY SCENE AFTER THE SNOW STOPPED



Submitted by Rosalie D.

THE ED VIEW



I am pleased to announce that we are resuming our Village tradition of having an in-person employee appreciation celebration this year. The celebration is Friday December 9, 2022. The daylong celebration will kick off with a holiday meal in the dining room from 11:00am – 1:00pm served by resident volunteers for our staff, followed by a festive program in the Community Room at 2:00pm. The program will include music, entertainment, the return of Santa Claus and ending with the distribution of the Resident Annual Fund checks. All residents and staff are encouraged to attend.

Ellen Corbin
*Executive Director,
The Village at Penn State*



MEET JULIA MCSHEA!



Hello! My name is Julia McShea, and I am a senior at Penn State University majoring within the field of Kinesiology (exercise science/ movement science option). I am originally

from Havertown, PA located within Delaware County outside of Philadelphia. I have always been deeply invested within the healthcare world and I greatly believe that exercise and fitness should be utilized as a vital form of medicine. I am very physically involved within fitness myself having played volleyball and softball for numerous years, as well as competing on the Penn State Club Crew team. I spend my free time focusing on weightlifting, intramural sports, hiking, cooking, skiing, and preparing for physical therapy school. I am also a culinary assistant for Penn State's dining services where I assist chefs in preparing various meals for students. When at home, I work as a bartender for my family's restaurant, *Jack McShea's*, as well as assisting in meal prepping. I am currently enjoying my last year at Penn State as I prepare to graduate in the spring of 2023.



RESIDENTS TOOK A FALL FOLIAGE BOAT TOUR ON THE PROUD MARY AT RAYSTOWN LAKE



FULL MOON AT THE VILLAGE



THE VILLAGE RADIO PLAYERS

Led by Karen F., had another wonderful show in October! Sam Spade: The Fairley-Bright Caper, about a woman marrying for the 5th time, a seasoned, cynical detective and a witch who all had something in common. It was the best attendance ever (126) and everyone had a great time. Thanks for all your hard work Karen and crew!



HALLOWEEN COSTUME PARTY

And the winners were.....

Most Original – Nelson

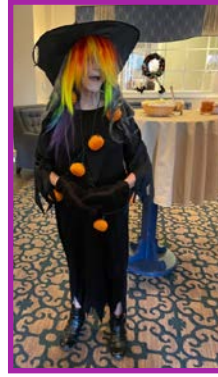
Cooliest – Jane T.

Sparkliest – Rosalie D.,
Marge S., and Pat D.

Best overall – Veda B.

Funniest – Helen M.

Scariest – Cindy P.



CULINARY CORNER

Looks like it's that special time of year again. The holiday season is upon us with all of its activities and seasonal treats. I wish all of the residents and staff the most joyous season. So go ahead and overindulge a little with Christmas cookies and holiday treats.



Dining services will be offering two special menus in December. This year both Christmas and New Year's Day fall on Sundays. Brunch service will be replaced by special holiday themed menus. Christmas day menu will highlight seasonal inspired items. Followed by New Year's Day menu featuring pork and sauerkraut to bring good luck in the New Year. Both menus will be a 4 course ala carte format designed for you to choose your favorite holiday treats. Watch your connected living for full menus and details.

Looking forward into 2023, there will be lots of updates to our current offerings. Revised cycle menu with new soups, salads, entrees, & desserts. The Bistro menu will be freshened with more emphasis on signature entrée platters. We will strive to utilize the highest quality ingredients and cook to order techniques to deliver a consistently quality meal each and every day.

Best wishes to all this December. A new year will quickly be upon us with the opportunity to serve the residents at the Village creative, inspired meals. I look forward to the challenge.

Matt Lambert
Executive Chef, The Village at Penn State

MEET YOUR NEW NEIGHBORS!



Larry and Elizabeth S.

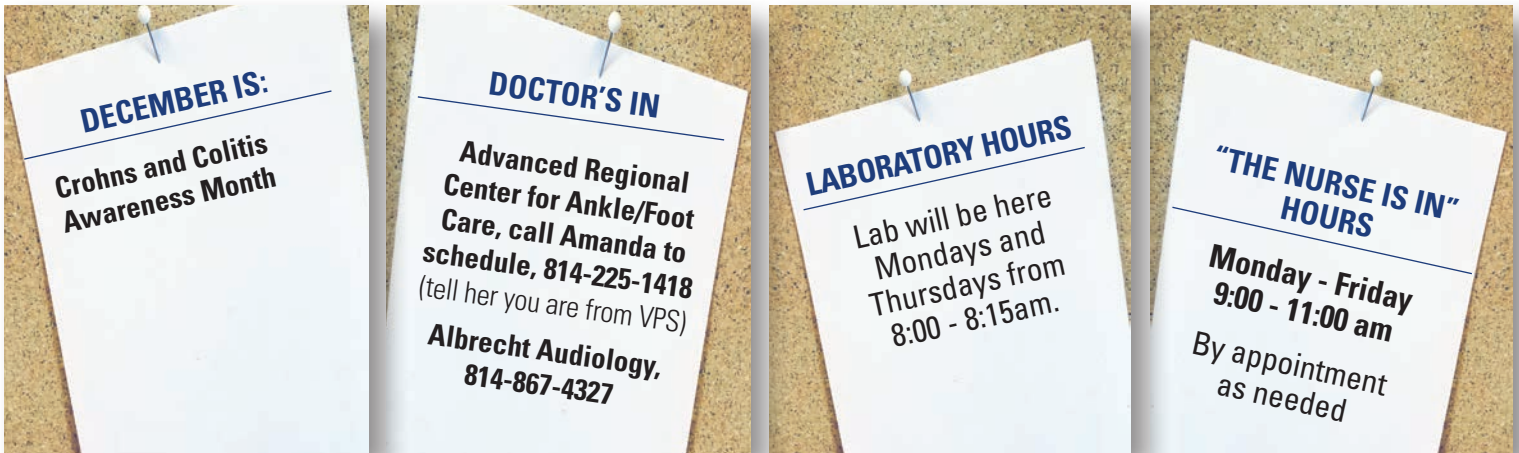


Mary Y.

HAPPY HOUR CHAT

VPS Residents had the opportunity to chat with PSU Athletic Director, Pat Kraft, during happy hour in November.





**The Podiatrist will be at The Village on December 12th from 12:30-4:00pm.
Podiatrist will be on site every 3rd Monday of most months.**

Wednesday, December 14th: Leslie Purcell from PSU will doing cleanings and triaging of hearing aids, (troubleshooting, instructions on use, etc) All walk in appointments.

Dr. Bethaney Tessitore from Albrecht Audiology has relocated and will no longer be coming to VPS.

RESIDENTS HAD A BLAST AT THE PSU HOMECOMING PARADE, HANDING OUT CANDY AND FOOTBALLS!



FALL SOCIALS AT PERSONAL CARE

Featuring soft pretzels and the last of the Oktoberfest beer of the season! We love Happy Hour Fridays with Jana from activities!



HAPPY HALLOWEEN!

Thank you to everyone that helped with the trick or treat yesterday, the residents loved it! Staff and friends from the community brought their little ones in for a Halloween celebration and went door to door collecting candy from residents in their costumes!

